



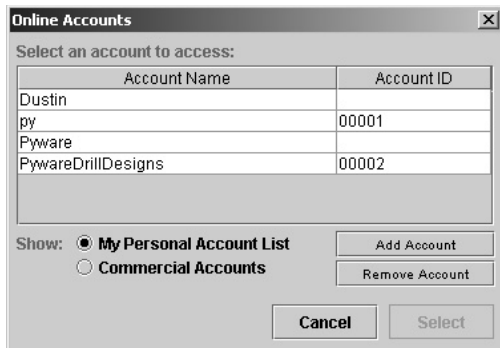
3D Java Interactive Update 2.0.0 Documentation

- Interactive Utilities
- Features from version 1.2.8-2.0.0
 - New Printing options
 - Mixed Intervals
 - Backup Function
 - Other Update features and Fixes

Interactive Utilities

The 3D Java Interactive has the unique interactive features that control the transfer and management of online files and users. The **Online File Manager** is the utility that manages the transfer of file to and from the secure ftp site.

- When the **Online File Manager** is chosen from the **Interactive** menu the account select window will display.



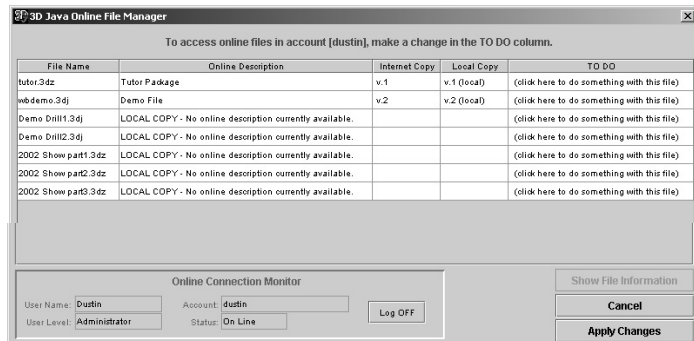
- Once an account is chosen and the **Select** button is pressed the **File Manager** will access the online account and the visitor sign on prompt will show.



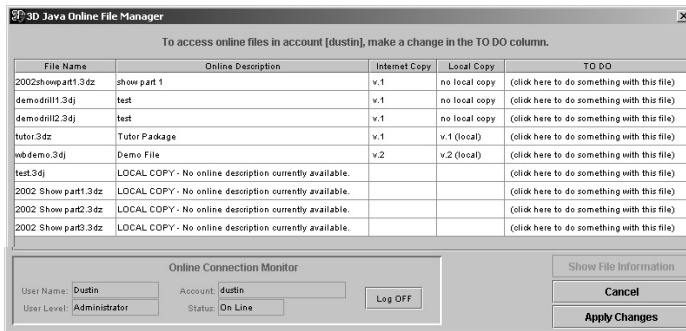
- A visitor can sign on as either a **Anonymous Guest** or a **Registered User**. When signing on as a **Anonymous Guest**, you can see the files on the account that have been given public access by the Account Administrator. Guests are typically students on school accounts, or shoppers on commercial accounts. **Anonymous Guests** require no sign-on name or password.

When signing on as a **Registered User**, a visitor has special access to view files that may not be seen by **Anonymous Guests**. These access privileges are set by the Account Administrator. Often **Registered Users** consists of clients of drill designers. These visitors need private access to the drill that they have commissioned. No one else should be able to access that drill. In order to sign-on as a **Registered User**, you must first be registered in the account by the Account Administrator. Once registered, the Account Administrator will give you a Sign-on Name and Password.

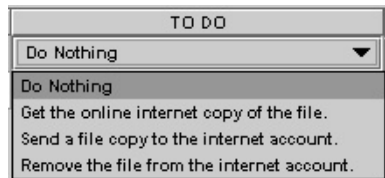
- Once a visitor has logged on to the account the File manager will display.



The **Online File Manager** will display all files the signed in user has privileges to see. All files will be displayed, both file local to the host computer, as well as the files located on the Online Account. The file location and version of the files can be seen in this window. In the figure above notice that only five of the nine files listed have been uploaded to the Online account and the rest of the file are located on the local computer only. On the next page notice the file versions are the same for the Tutor package file and the demo file, also notice that the files demodrills1.3dj, demodrills2.3dj, and 2002showpart1.3dz are only located on the online account. These files have not yet been downloaded to the local computer.



- When logged in as the administrator there are four tasks that can be chosen to do to the files in the list. Beside each of the drill files is a TO DO pull down menu listing the applicable tasks.



Do Nothing will not make any changes to the file.

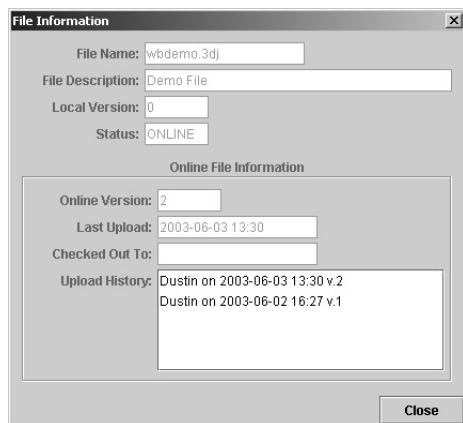
Get the online internet copy of the file will download the online version of the file to the local computer.

Send a file copy to the internet account will upload the local version of the file to the online account. This option is only available to the administrator.

Remove the file from the internet account will remove the file entirely from the online account. This option is only available to the administrator.

- Apply Changes** will perform the tasks selected for each file.
- Cancel** will log off the online account and close the **Online Account Manager**.

- **Show file Information** will show the file information dialog. To open the show file information window, click on a file in the list and then click on the **Show File Information** button and the **File Information** dialog will display.



The 'File Information' dialog box displays details for a file named 'wbdemo.3dj'. It includes fields for File Name, File Description (Demo File), Local Version (0), and Status (ONLINE). A section titled 'Online File Information' contains fields for Online Version (2), Last Upload (2003-06-03 13:30), and Checked Out To. An 'Upload History' list shows two entries: 'Dustin on 2003-06-03 13:30 v.2' and 'Dustin on 2003-06-02 16:27 v.1'. A 'Close' button is at the bottom right.

File Name:	wbdemo.3dj
File Description:	Demo File
Local Version:	0
Status:	ONLINE
Online File Information	
Online Version:	2
Last Upload:	2003-06-03 13:30
Checked Out To:	
Upload History:	Dustin on 2003-06-03 13:30 v.2 Dustin on 2003-06-02 16:27 v.1

The **Online Connection Monitor** monitors the connection to the online account and displays the user and account information.



The 'Online Connection Monitor' dialog box shows user and account information. It includes fields for User Name (dustin), Account (dustin), User Level (Administrator), and Status (On Line). A 'Log OFF' button is located on the right.

Online Connection Monitor	
User Name:	dustin
Account:	dustin
User Level:	Administrator
Status:	On Line
Log OFF	

User Name shows the current user logged in.

User Level shows the privilege level of the currently logged in user.

Account shows the account in which the user is currently logged on to.

Status shows the current status of the file manager.

Online Users & Passwords

The **Online Users & Passwords** utility manages the access privileges given to visitors to your account.

- Once **Online Users & Passwords** has been selected the **User Privileges Editor** will display.

The **User Privileges Editor** dialog box shows a table of users and their privileges. The table has columns for User, Level, and several file names. The users listed are Dustin (Administrator), Anonymous Guest (Guest), and Shirlent (Guest). The privileges for each user are listed in the columns. Below the table, there is a section for the Online Connection Monitor showing the current user (Dustin) and account (dustin). There are also buttons for New User, Edit User, Delete User, and Cancel.

User	Level	2002sho...	demodril...	demodril...	tutor.3dz	webdemo...
Dustin	Administrator	r/w	r/w	r/w	r/w	r/w
Anonymous Guest	Guest	hide	read	read	hide	hide
Shirlent	Guest	read	read	read	hide	hide

This account can have one administrator and an unlimited number of guests. ☒ Allow anonymous guests for public access.

Online Connection Monitor

User Name: Dustin Account: dustin Log OFF

User Level: Administrator Status: On Line

New User Edit User Cancel

Delete User Save

The **Privilege Editor** allows the administrator to add or edit users and change the viewing privileges of all users who visit your online account. When you want a visitor to have special access to some files and not others you will want to add them to the user list and then tell them to sign on to the account as a **Registered User** with the user name and password you set up for them.

- New Registered User** will display the **Edit User Privileges** dialog. Type the **User Name** and **Password** and select the files the user will have access to when they visit your account. If you have not uploaded any files to the account, you will need to edit the users privileges again after the files have been uploaded.

The **Edit User Privileges** dialog box shows fields for User Name (test), Level (GUEST), and Password (1234). Below these fields is a table of Online Files with checkboxes for Read Only. The files listed are 2002showpart1.3dz, demodril1.3dz, demodril2.3dz, tutor.3dz, and webdemo.3dz. There are also checkboxes for Set all files readable and Set all files editable. Buttons for Cancel and Okay are at the bottom.

Online Files	Read Only
2002showpart1.3dz	<input checked="" type="checkbox"/>
demodril1.3dz	<input checked="" type="checkbox"/>
demodril2.3dz	<input checked="" type="checkbox"/>
tutor.3dz	<input type="checkbox"/>
webdemo.3dz	<input type="checkbox"/>

☐ Set all files readable.
☐ Set all files editable.

Cancel Okay

- Okay** will accept the changes to the new user.

- **Edit User** will display the **Edit User Privileges** dialog. The **Read Only** selection box will allow access to the selected file for the user. If it is not checked the user will not see the file when they visit the account. When editing the Administrator account the log in and contact information will display. This contact information will be displayed to users that appear to be having trouble signing on to your account.

Online Files	Read Only
2002showpart1.3dz	<input checked="" type="checkbox"/>
demodrill1.3dj	<input checked="" type="checkbox"/>
demodrill2.3dj	<input checked="" type="checkbox"/>
tutor.3dz	<input type="checkbox"/>
wbdemo.3dj	<input type="checkbox"/>

If you click **Set all Files Readable** then all files will appear when the user visits your account. This includes all files currently in the account as well as any files you may add to the account in the future.

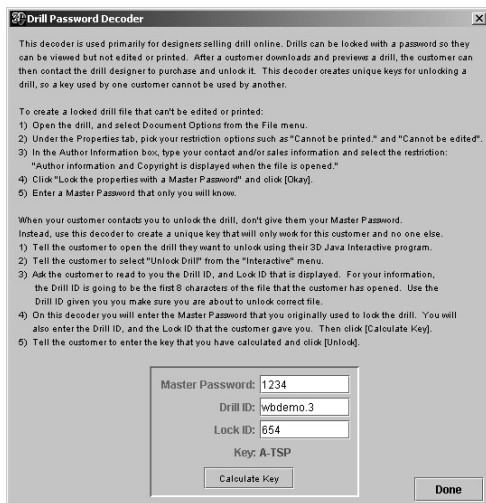
- **Delete User** will delete the selected user.
- **Anonymous Guests** typically you will use **Anonymous Guest** for public access to your account. This may be for performers downloading a drill to study, or a shopper downloading demos from a commercial account.

Drill Lock Decoder

The **Drill Lock Decoder** utility is used primarily for designers selling drill online. Drills can be locked with a password so they can be viewed but not edited or printed. After a customer downloads and previews a drill, the customer can then contact the drill designer to purchase and unlock it. This decoder creates unique keys for unlocking a drill, so a key used by one customer cannot be used by another.

To create a locked drill file that can't be edited or printed:

- Open the drill, and select **Document Options** from the **File** menu.
- Under the **Properties** tab, pick your restriction options such as "Cannot be printed." and "Cannot be edited".
- In the **Author Information** box, type your contact and/or sales information and select the restriction:
"Author information and Copyright is displayed when the file is opened."
- Click "**Lock the properties with a Master Password**" and click [Okay].



- Enter a **Master Password** that only you will know.

When your customer contacts you to unlock the drill, don't give them your **Master Password**.

Instead, use this decoder to create a unique key that will only work for this customer and no one else.

- Tell the customer to open the drill they want to unlock using their 3D Java Interactive program.
- Tell the customer to select "**Unlock Drill**" from the "**Interactive**" menu.
- Ask the customer to read to you the **Drill ID**, and **Lock ID** that is displayed. For your information, the **Drill ID** is going to be the first 8 characters of the file that the customer has opened. Use the **Drill ID** given to make sure you are about to unlock the correct file.
- On this decoder you will enter the **Master Password** that you originally used to lock the drill. You will also enter the **Drill ID**, and the **Lock ID** that the customer gave you. Then click [**Calculate Key**].
- Tell the customer to enter the key that you have calculated and click [**Unlock**].

Unlock Drill

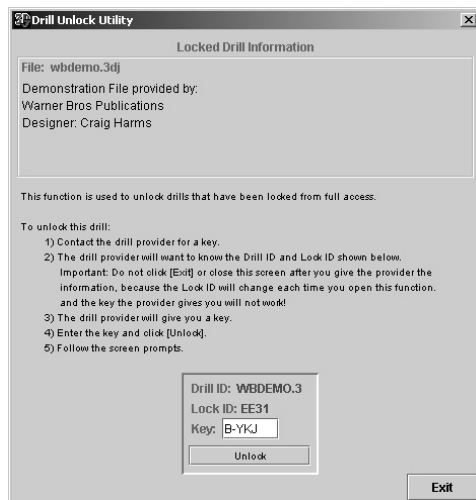
The **Unlock Drill** function is used to unlock drills that have been locked from full access by a drill provider.

To unlock a drill:

- Contact the drill provider for a key.
- The drill provider will want to know the **Drill ID** and **Lock ID** displayed in this window.

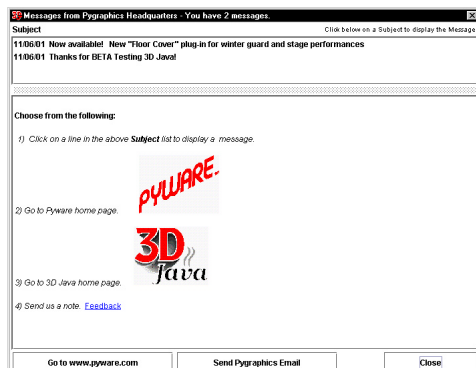
Important: Do not click **[Exit]** or close this screen after you give the provider the information, because the **Lock ID** will change each time you open this function and the key the provider gives you will not work!

- The drill provider will give you a key.
- Enter the key and click **[Unlock]**.
- Follow the screen prompts.



Check for Pyware Messages

The **Pyware Message Board** is an automated information system that checks with Pyware Headquarters for any important notices such as updates that are currently available for you to download.



To Check messages:

Select **Check for Messages at Pyware Headquarters** from the Interactive menu.

If it is necessary to log on to the internet, then do that now.

3D Java will check Pyware headquarters for any new updates or important notices that you may be interested in and display the list of messages in the Subject box. If you want to read a message, click the message listed in the Subject box and it will display.

Print Charts

With 3D, any count of a drill can be printed. However, one usually only wants printouts at set points. Charts can be printed by count number or by Set number. Sets are determined by the location of the **Page Tabs** on the **Count Track**. Prior to printing you may want to add or remove certain **Page Tabs** from the **Count Track** so the Sets will printout according to your preference.

- Select **Print Charts** from the **File** menu and the following preview screen will display.

The image shows a 'Print Selection' dialog box. At the top, there are three radio buttons: 'From Page Tabs' (selected), 'Currently Displayed Count', and 'Thumbnails (per page 8)'. Below these is a table with columns: Set, Count, Print, Include Overlay, Include Paths, and Title. The table contains six rows of data.

Set	Count	Print	Include Overlay	Include Paths	Title
21	0	<input checked="" type="checkbox"/>	<input checked="" type="checkbox"/>	None	
22	12	<input checked="" type="checkbox"/>	<input checked="" type="checkbox"/>	None	
23	31	<input checked="" type="checkbox"/>	<input checked="" type="checkbox"/>	None	
24	43	<input checked="" type="checkbox"/>	<input checked="" type="checkbox"/>	None	
25	58	<input checked="" type="checkbox"/>	<input checked="" type="checkbox"/>	None	
26	69	<input checked="" type="checkbox"/>	<input checked="" type="checkbox"/>	None	

Print Selection options are used to determine which counts of a drill are printed.

From Page Tab option will print the selected page tabs showing in the Drillbook.

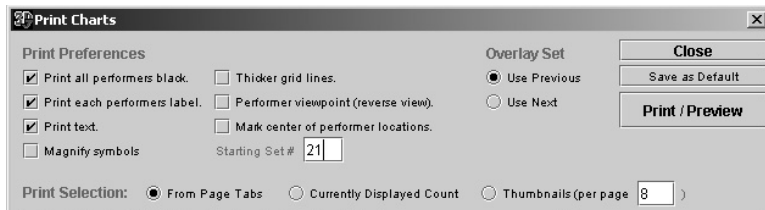
Currently Displayed Count option will print the current count displayed. the displayed count is determined by the location of the red anchor.

Thumbnails per page will print small grids to fill the page. Ideal settings for dotbooks are 8 thumbnails per page in portrait orientation, or 4 thumbnails per page in landscape orientation.

Print all performers black is useful when it is important to make clear black and white reproductions of the printout. You may choose to check this option for color printers because the color symbols will not copy as clear when in color. You may also choose to check this option for black and white printers because colored symbols will be printed as a shade of gray and also will not copy as clearly as if they were black. Typically if you plan to reproduce the printouts you will want all of the symbols to be printed black.

Print each performers label determines whether a label is printed (usually a number) beside each performers symbol. Normally, if labels were entered with the Performer Labeling tool, this option is checked. However, sometimes when a chart is very cluttered, it is preferred to remove the labels to make the chart more clear.

Print text option determines whether the text created with the **Text** tool will be printed on the chart. The **Print text** option also determines whether arrow indicators created with the **Arrow Labeling** tool will be created.



Magnify Symbols option will enlarge the symbols and labels printed on the charts.

Thicker grid lines option will print the field grid with thicker lines. This is sometimes useful on laser printers low on toner. Also, on some printers the grid lines are too thin to reproduce well.

Performer viewpoint (reverse view) will print the charts from the performers perspective.

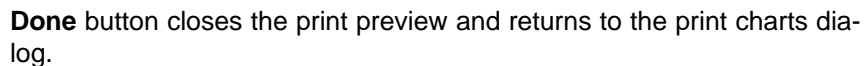
Mark center of performer location will place a dot in the center of the positions where the performer will be standing.

Starting Set # will change the starting set number. For example if the first drill ends with page tab 23 the continuation file can begin with page 24.

Shortcuts pull-down menus change the settings in the drill book options in the print charts dialog.



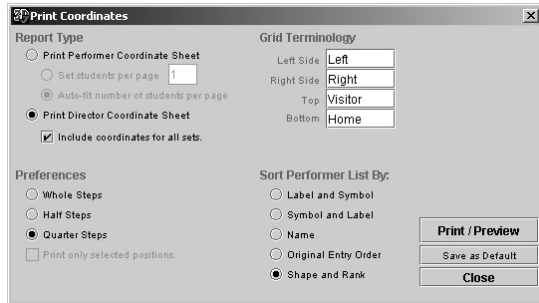
The **Print** shortcut menu will remove or add all of the checks from the selection boxes in the print column.



Print Coordinates

With 3D Java Interactive coordinates for any count of a drill can be printed. However, one usually only wants coordinates for the set points in the drill. 3D uses the Page Tabs on the Count Track to determine the sets in the drill. Prior to printing you may want to add or remove certain **Page Tabs** from the **Count Track** so the Sets will printout according to your preference.

- Select **Print Coordinates** from the **File** menu and the following preview screen will display:

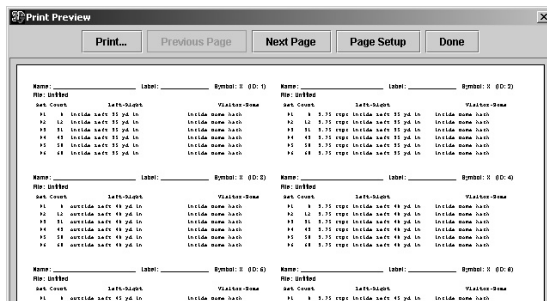


The **Print Coordinates** dialog box contains the following sections:

- Report Type:** Radio buttons for **Print Performer Coordinate Sheet** (selected), **Set students per page** (with a value of 1), **Auto-fit number of students per page**, and **Print Director Coordinate Sheet**. A checked checkbox **Include coordinates for all sets.**
- Grid Terminology:** Text boxes for **Left Side** (Left), **Right Side** (Right), **Top** (Visitor), and **Bottom** (Home).
- Preferences:** Radio buttons for **Whole Steps**, **Half Steps**, and **Quarter Steps** (selected). A checkbox **Print only selected positions.**
- Sort Performer List By:** Radio buttons for **Label and Symbol**, **Symbol and Label**, **Name**, **Original Entry Order**, and **Shape and Rank** (selected).
- Buttons: **Print / Preview**, **Save as Default**, and **Close**.

There are two coordinate **Report Type** options:

- 1) **Print Performer Coordinate Sheet** is a list of coordinates for a performer. The coordinate list contains a coordinate for each **Page Tab** location (set) in the drill.
Set students per page will lock the number of student coordinates that will print per page to the number entered.
Auto-fit number of students per page allows the 3D Java Interactive program to determine the number of student coordinates to fit on a page.

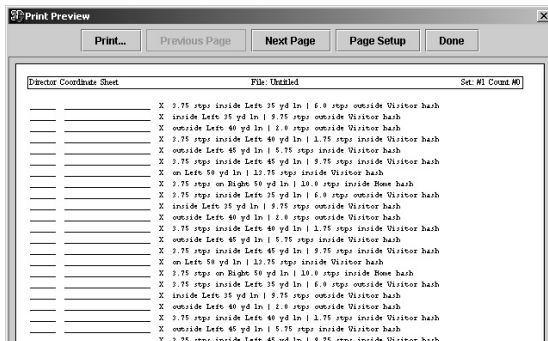


The **Print Preview** window displays a grid of coordinate data for multiple performers. At the top are buttons: **Print...**, **Previous Page**, **Next Page**, **Page Setup**, and **Done**.

Per: 101002	Label:	Symbol: S (SD: 1)	Per: 101003	Label:	Symbol: S (SD: 2)
Set Count	Left-Right	Visions-Shape	Set Count	Left-Right	Visions-Shape
1	Include Left 11 p4 in	Include Name Last	1	1.11 rpgt Include Left 11 p4 in	Include Name Last
2	Include Left 11 p4 in	Include Name Last	2	1.11 rpgt Include Left 11 p4 in	Include Name Last
3	Include Left 11 p4 in	Include Name Last	3	1.11 rpgt Include Left 11 p4 in	Include Name Last
4	Include Left 11 p4 in	Include Name Last	4	1.11 rpgt Include Left 11 p4 in	Include Name Last
5	Include Left 11 p4 in	Include Name Last	5	1.11 rpgt Include Left 11 p4 in	Include Name Last
6	Include Left 11 p4 in	Include Name Last	6	1.11 rpgt Include Left 11 p4 in	Include Name Last

The preview shows multiple pages of data, with the first page displaying coordinates for performers 101002 and 101003, and subsequent pages showing data for performers 101004 and 101005.

- 2) **Print Director Coordinate Sheet** is a list of all performers. The list contains a coordinate for each performer at a **Page Tab** (set). A Director Coordinate Sheet can be printed for each **Page Tab** in the drill by selecting the **Include coordinates for all sets** option.



Coordinates

can be printed at three different resolutions: **Whole Steps**, **Half Steps**, and **Quarter Steps**.

Print only selected positions is useful for reprinting a single performer or a group of performers. Select the performer(s) with a selection tool before selecting **Print Coordinates** from the **File** menu. Then check the **Print only selected positions** option.

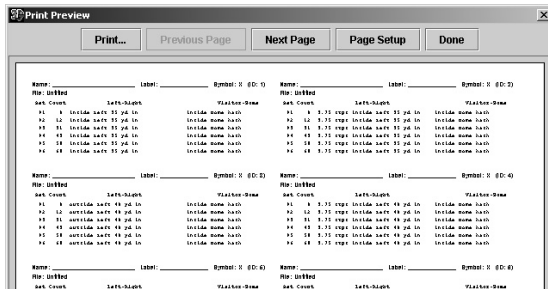


Sort performer list by: option sorts the coordinates by one of the following ways : Label and Symbol, Symbol and Label, Name, Original entry order, or Shape and Rank.

Setting up the **Grid Terminology** to match the terms commonly used by your performing group will make the coordinates easier to understand by the performers. For example, on a football field grid the **Left Side** of the grid (the left endzone) may be referred to as the North Goal by your performers rather than the default term Left.

Close button exits the Print Coordinates window.

Save as Default button saves the settings of the **Grid Terminology** and **Preferences** as default values.



Print/Preview will open the page setup display then render and display a preview of the coordinate report according to the settings of the print coordinate report options.

Print will send the job to the printer.

Previous Page will move to the previous preview page of the print job.

Next Page will move to the next preview page of the print job.

Page Setup button opens the printers page setup dialog.

Done button closes the print preview and returns to the print coordinates dialog.

Print Cast Sheet

Whether you have a large band or a small band the cast sheet is a very useful tool. The cast sheet will display and print all symbols, labels, and names of the performers in the drill.

When you select **Print Cast Sheet** from the **File** menu the **Print Cast Sheet** dialog will display.

Name	Label	Symbol	Notes
	1	G	
Jason	1	G	
	2	G	
Heather	2	G	
	3	G	
Krystin	3	G	
	4	G	
Dustin	4	G	
	5	G	
Tiffany	5	G	

Print Sort Order

☒ by Symbol, Label, Name
☐ by order entered
☐ by Name, Symbol, Label
☐ by Label, Symbol, Name

☒ Print all symbols black

Save as Default
Print / Preview
Done

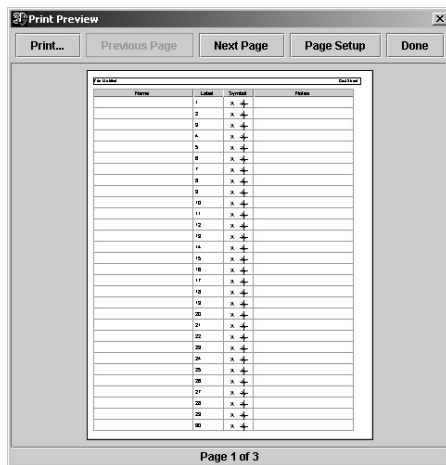
Print Sort Order will sort the names in the cast sheet according to one of the following options: by Symbol, Label, Name; by order entered; by Name, Symbol, Label; or by Label, Symbol, Name. The name is entered using the **Label Tool**. The **Notes** column is just a space on the printout for taking notes on performers during rehearsals. The notes column can not be edited through the program.

Print all symbols black will print all symbols in the cast sheet black instead of the color defined in the label function.

Done button exits the Print Cast Sheet window.

Save as Default button saves the settings of the **Sort Order**.

Print/Preview will open the page setup display then render and display a preview of the Cast Sheet report according to the settings of the print cast sheet manager.



Print will send the job to the printer.

Previous Page will move to the previous preview page of the print job.

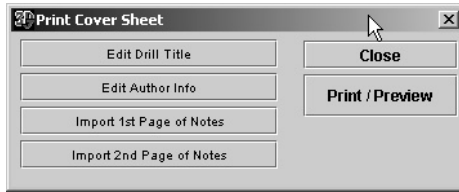
Next Page will move to the next preview page of the print job.

Page Setup button opens the printers page setup dialog.

Done button closes the print preview and returns to the cast sheet manager.

Print Cover Sheet

The **Print Cover Sheet** function will print a cover sheet for the drill book. When you choose Print Cover Sheet from the file menu the print cover sheet dialog will display.



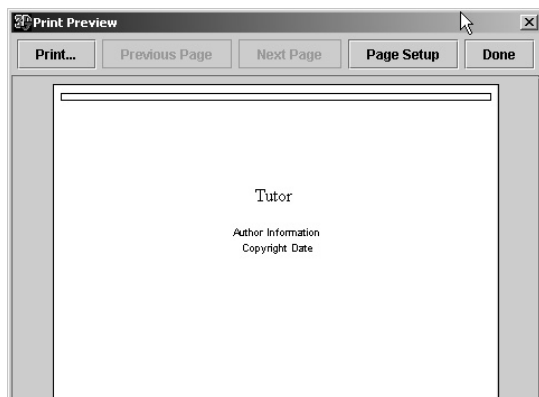
Edit Drill Title will bring up the document options dialog so that the title may be changed.

Edit Author Info will bring up the document options dialog so that the Author Info may be changed.

Import 1st page of Notes and **Import 2nd page of Notes** will allow you to import a text file to have as notes pages to follow the cover sheet for any additional instructions.

Close will close the Print Cover Sheet dialog and return to the design grid.

Print/Preview will open the page setup display, render and display a preview of the Cover Sheet report according to the settings of the print cover sheet dialog.



Print will send the job to the printer.

Previous Page will move to the previous preview page of the print job.

Next Page will move to the next preview page of the print job.

Page Setup button opens the printers page setup dialog.

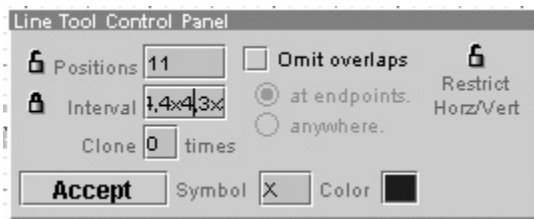
Done button closes the print preview and returns to the design grid.

Mixed Intervals

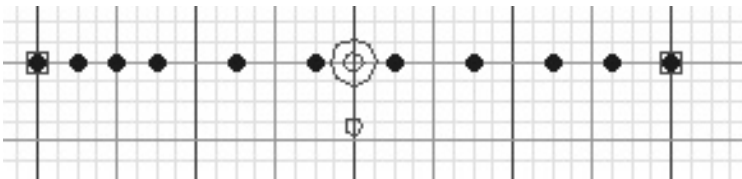
Sometimes you need to have positions at different intervals in the same shape. the **Mixed interval** function allows you to create forms with multiple intervals. The **Mixed Interval** function is built in to each of the drawing tools. The different intervals are entered in the interval text box. The **Mixed Interval** is entered with the interval preceding the number of players at that interval. the mixed interval setting can be entered before or after you create your shape, but have to be entered before you accept the form. For example a line with 4 positions at a 2 step interval, followed by 4 positions at a 4 step interval, followed by 3 positions at a 3 step interval would be expressed the following way.

Ex. 2x4,4x4,3x3

This should be entered in the interval text box as seen below.

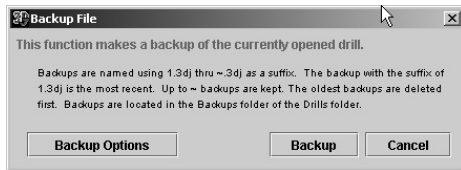


The line should look the same as seen below.

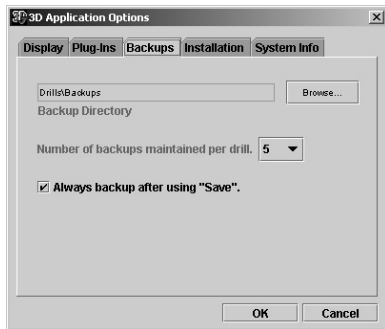


Back Up Function

This function saves a backup of the current file open.



The Backup Options button will bring up the options for the backup utility. You may change the number of backup files kept at one time, the location of the backup files, and you have the option to have a backup file saved every time you choose save from the file menu.



Spotlight Tool

The **Spotlight selection tool** is used to select and highlight a position to help a performer watch their movement while animating a drill.



Click on the **Spotlight** Selection tool on the **Tool Palette** and the **Spotlight Control Panel** will display.

A screenshot of the 'Spotlight Tool Control Panel' dialog box. The title bar reads 'Spotlight Tool Control Panel'. Below the title bar, it says 'Click on a performer, or type below to search.' There are two input fields: the first is labeled 'Name' and the second is labeled 'Symbol and/or Label (no spaces)'. To the right of these fields are three radio button options: 'No bridges', 'Bridge spotlight' (which is selected with a black dot), and 'Bridge all'. At the bottom left is an 'Accept' button, and at the bottom right is a 'Clear' button.

To spotlight a position you can either type in the positions name, symbol, or label. There are options that allow you to see the bridges or paths that the positions will take to go to their next location. The No bridges option will not display bridges or paths. Bridge spotlight will display the spotlighted position's bridge or path. Bridge All will show bridges or paths of all positions visible on the design grid.

Other Features and Fixes

- **Locked Interval** morphing
- **Smooth Shape** option in the **Free Form** tool
- Added **Snap to Grid** function
- Keyboard Shortcuts to tools and menu Items
- **Tools Menu** added for shortcuts to **Tool Palette**
- * New option in the **Grid Designer**, to remove Yardline markers by double clicking on the yellow oval that determines where the yard line is placed.
- Changed the selected symbols to draw red bold symbol instead of the light blue dot to make it easier to identify the performer by its symbol.
- **Lock First Person at the Top** of circle option to make it easier when matching the performers.
- Set **Predict Next** option to default off.
- Path printing prints a large dot at the start of the path and small dots in the path.
- **Average Interval** in the **Scale Tool** when a shape is selected.
- Warning when a transition is set across a tab.
- **View Symbols** in all editing tools.
- No CD required to run the program.
- New open and save as dialogs.